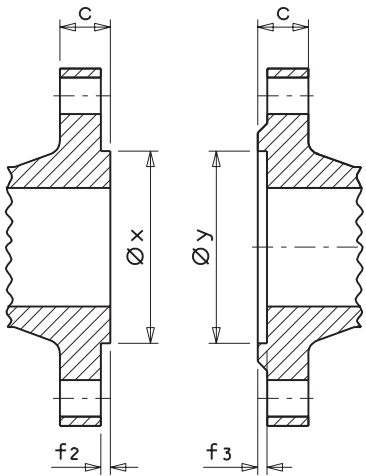




MIVAL

**INCASTRI SU VALVOLE E CONTROFLANGE DI ACCIAIO
E ACCIAIO INOX SECONDO EN 1092-1: 2003**
TONGUE AND GROOVE ON STEEL AND STAINLESS STEEL
VALVES AND FLANGES ACCORDING TO EN 1092-1: 2003

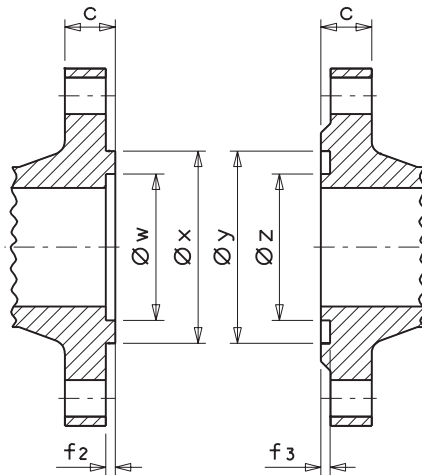
Tipo/Type 1



MASCHIO-MALE

FEMMINA-FEMALE

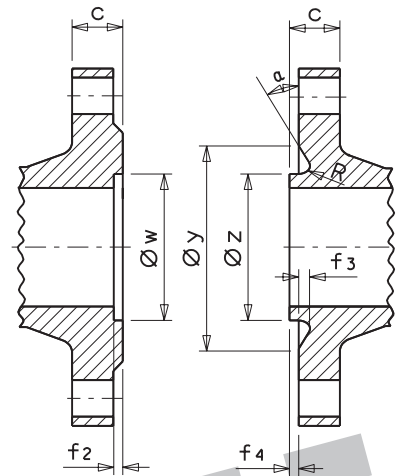
Tipo/Type 2



MASCHIO-MALE

FEMMINA-FEMALE

Tipo/Type 3



MASCHIO-MALE

FEMMINA-FEMALE

Nota: la quota "c" comprende lo spessore della superficie di tenuta a gradino.

Note: dimension "c" includes the raised face thickness.

DN [mm]	DN [inch]	dimensioni in [mm] / dimensions [mm]																	
		INCAMERATURA SEMPLICE SINGLE RECESSING				INCAMERATURA DOPPIA DOUBLE RECESSING				INCAMERATURA PER GUARNIZIONI A SEZIONE CIRCOLARE (OR) RECESSING FOR GASKETS WITH CIRCULAR SECTION O-RINGS									
		Ø x	Ø y	f ₂	f ₃	Ø w	Ø x	Ø y	Ø z	f ₂	f ₃	Ø x	Ø y	Ø z	f ₂	f ₃	f ₄	α	R
10	3/8"	34	35	4,5	4,0	24	34	35	23	4,5	4,0	34	35	23	4,5	4,0	2,0	-	2,5
15	1/2"	39	40	4,5	4,0	29	39	40	28	4,5	4,0	39	40	28	4,5	4,0	2,0	-	2,5
20	3/4"	50	51	4,5	4,0	36	50	51	35	4,5	4,0	50	51	35	4,5	4,0	2,0	41°	2,5
25	1"	57	58	4,5	4,0	43	57	58	42	4,5	4,0	57	58	42	4,5	4,0	2,0	41°	2,5
32	1 1/4"	65	66	4,5	4,0	51	65	66	50	4,5	4,0	65	66	50	4,5	4,0	2,0	41°	2,5
40	1 1/2"	75	76	4,5	4,0	61	75	76	60	4,5	4,0	75	76	60	4,5	4,0	2,0	41°	2,5
50	2"	87	88	4,5	4,0	73	87	88	72	4,5	4,0	87	88	72	4,5	4,0	2,0	41°	2,5
65	2 1/2"	109	110	4,5	4,0	95	109	110	94	4,5	4,0	109	110	94	4,5	4,0	2,0	41°	2,5
80	3"	120	121	4,5	4,0	106	120	121	105	4,5	4,0	120	121	105	4,5	4,0	2,0	41°	2,5
100	4"	149	150	5,0	4,5	129	149	150	128	5,0	4,5	149	150	128	5,0	4,5	2,5	32°	3,0
125	5"	175	176	5,0	4,5	155	175	176	154	5,0	4,5	175	176	154	5,0	4,5	2,5	32°	3,0
150	6"	203	204	5,0	4,5	183	203	204	182	5,0	4,5	203	204	182	5,0	4,5	2,5	32°	3,0
200	8"	259	260	5,0	4,5	239	259	260	238	5,0	4,5	259	260	238	5,0	4,5	2,5	32°	3,0
250	10"	312	313	5,0	4,5	292	312	313	291	5,0	4,5	312	313	291	5,0	4,5	2,5	32°	3,0
300	12"	363	364	5,0	4,5	343	363	364	342	5,0	4,5	363	364	342	5,0	4,5	2,5	32°	3,0
350	14"	421	422	5,5	5,0	395	421	422	394	5,5	5,0	421	422	394	5,5	5,0	3,0	27°	3,5
400	16"	473	474	5,5	5,0	447	473	474	446	5,5	5,0	473	474	446	5,5	5,0	3,0	27°	3,5
450	18"	523	524	5,5	5,0	497	523	524	496	5,5	5,0	523	524	496	5,5	5,0	3,0	27°	3,5
500	20"	575	576	5,5	5,0	549	575	576	548	5,5	5,0	575	576	548	5,5	5,0	3,0	27°	3,5
600	24"	675	676	5,5	5,0	649	675	676	648	5,5	5,0	675	676	648	5,5	5,0	3,0	27°	3,5
700	28"	777	778	5,5	5,0	751	777	778	750	5,5	5,0	777	778	750	5,5	5,0	3,0	27°	3,5
800	32"	882	883	5,5	5,0	856	882	883	855	5,5	5,0	882	883	855	5,5	5,0	3,0	27°	3,5
900	36"	987	988	5,5	5,0	961	987	988	960	5,5	5,0	987	988	960	5,5	5,0	3,0	27°	3,5
1000	40"	1092	1094	6,5	6,0	1062	1092	1094	1060	6,5	6,0	1092	1094	1060	6,5	6,0	4,0	28°	4,0